



# TORTLE AIR

Head Repositioning System for preemies and healthy newborns up to 6 months adjusted age.

## TurtleAir Benefits

Supports the AAP recommendation to reposition baby's head to prevent cranial asymmetry and head preference.

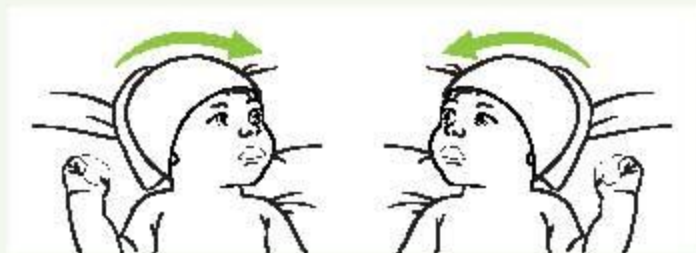
### Patented support roll

- Deflects baby's head off flat spots to treat dolichocephaly, plagiocephaly, and brachycephaly
- Applies passive stretch to asymmetric neck muscles

**Cannula tabs are designed to hold nasal cannulas (including RAM) and feeding tubes.**

### Velcro front opening and adjustable tabs

- Simple and easy to apply which minimizes handling and stress on baby
- Provides easy access for scalp IVs and head ultrasounds
- Ensures a proper and comfortable fit
- Reduces staff intervention time



## Available in four sizes

SIZE	CASE #	WEIGHT	HEAD CIRCUMFERENCE
X-SMALL	65913	1.50-2.25 Kg	30-33 cm
SMALL	65905	2.25-4.50 Kg	33-38 cm
MEDIUM	65907	4.50-6.80 Kg	38-41 cm
LARGE	65909	6.80-9.00 Kg	41-46 cm

10 units per case. Machine washable.



The TurtleAir is a simple and effective head repositioning system that assists caregivers in providing optimal infant care.

FDA-cleared for use in hospital inpatient and outpatient clinics and at-home post discharge (car seats, stroller, and cribs with supervision).

## Recommended for use in

- NICU / SCN / PICU
- Post-Partum Healthy Newborn
- PT/OT Rehabilitation
- Crani-o-facial, plastics, and reconstructive surgery clinics
- Early Intervention Programs
- Developmental high-risk follow-up clinics



FDA-cleared

**Supports AAP**

**Back-to-Sleep Campaign**

Distributed By:



Access Medical Supply, Inc.

Phone: 847.891.6210

Fax: 847.891.6215

[www.accessmedicalsupply.com](http://www.accessmedicalsupply.com)